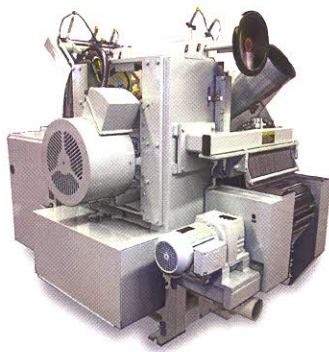
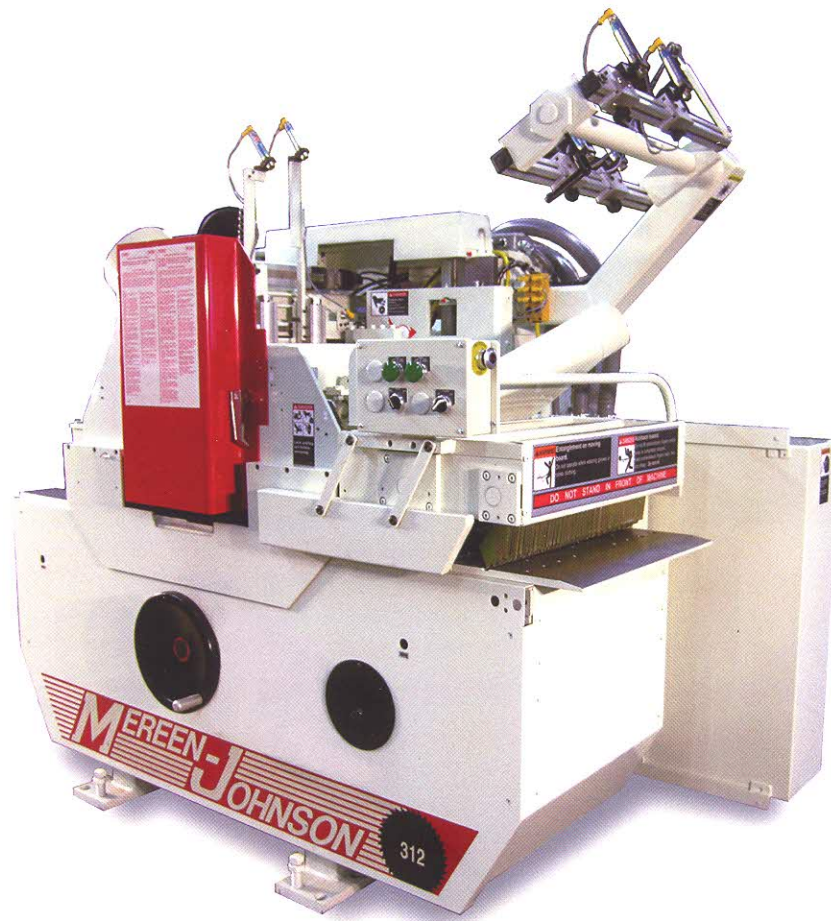




MEREEN-JOHNSON MACHINE CO.

Model 312-DC/SR **“Select-A-Rip”**

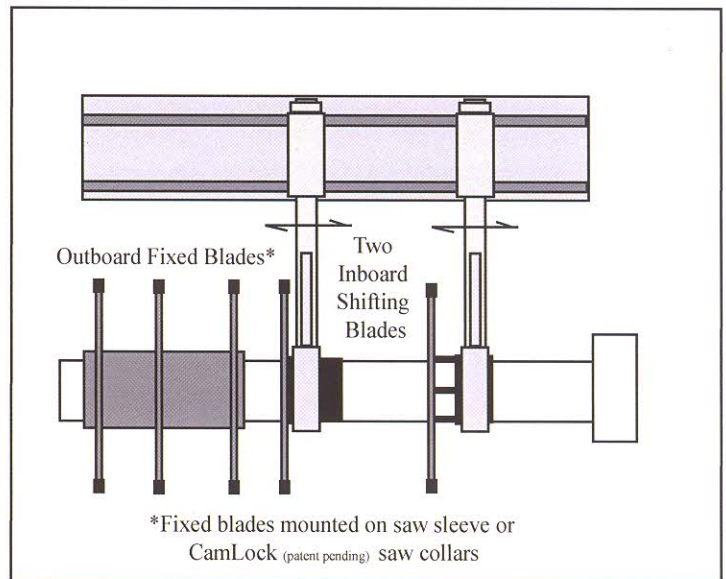
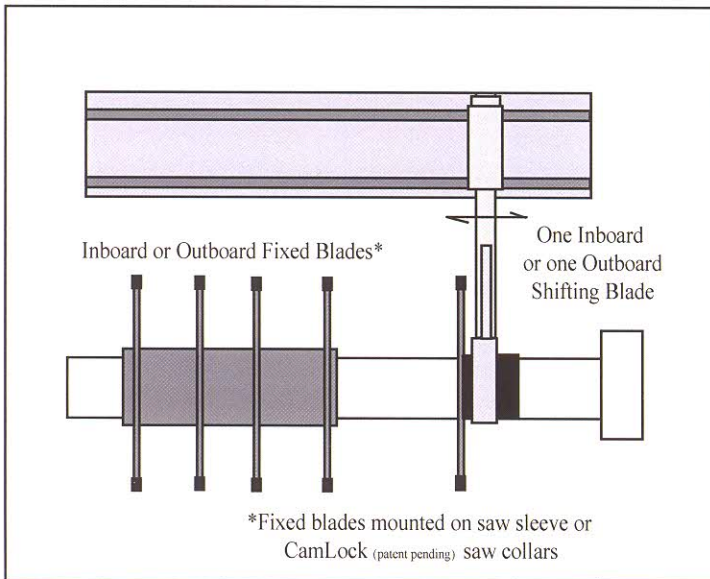
Straight Line Multiple Rip Saw



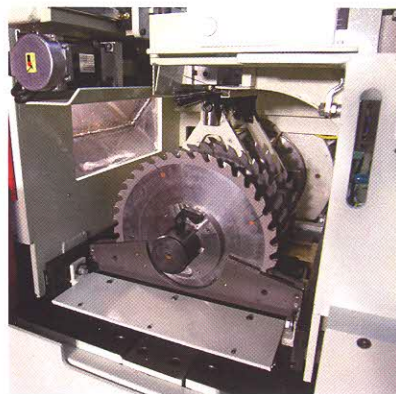
An Economical Choice for Flexibility, Reliability, Productivity, and Accuracy

GANG RIP SAW PRODUCTIVITY

Imagine having the right parts at the right time....
without sacrificing yield.



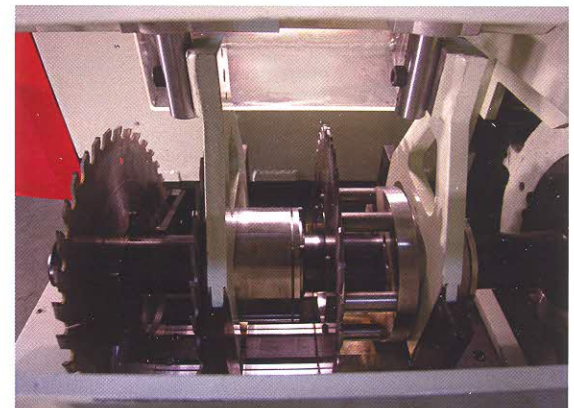
Inboard shifting saws allow quick access of fixed saw blades providing the industry's fastest change-overs.



Award Winning Sales and Service Support

Shifting hubs with wide land for stability provide 1" net rip minimums between shifting blades.

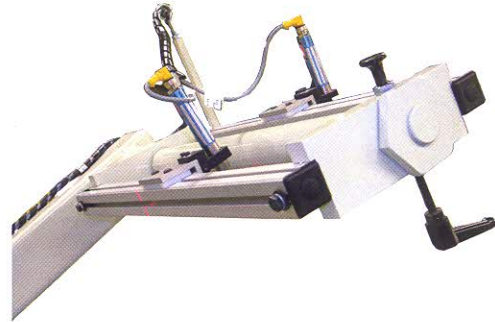
Heavy-duty overbeam provides an extremely rigid support for the shifting saw carriages.



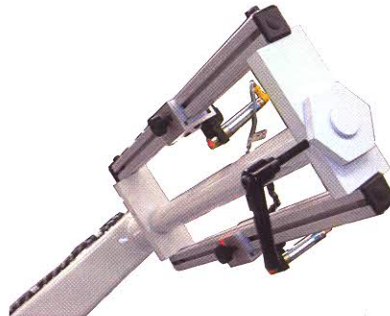
“SELECT-A-RIP” VERSATILITY

Options:

Powered vertical pressure head - Powered arbor hoist - “CamLock” (patent pending) saw collars - Arbor motor sound enclosure - “Rip Navigator” Optimizing System - Slide type adjustable guide - Manual or Automatic material handling systems.



laser stand with tip-back feature and open pressure head design facilitates alignment of laser reference lights with fixed saw blades.



Severe-duty, high efficiency, cast iron, direct drive arbor motor provides reliable accuracy with no belts to tension or replace.

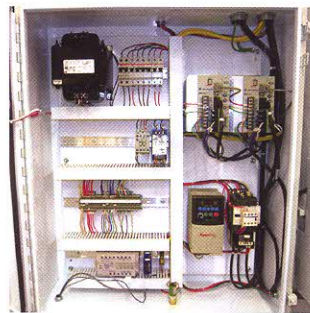


UL / CSA approved electrical cabinet assembly. Other certification requirements available upon request.

Field Proven Performance



High friction “Posi-Feed” bed featuring aluminum slats with replaceable steel-backed rubber inserts. Precision feed chains ride on hardened steel “Double-Vee” rails.



Optional machine mounted Power Table for automatic feeding provides improved accuracy and reduces operator fatigue.

Increase Yield and Productivity

Mereen-Johnson manufactures a complete line of gang rip saw infeed systems from manual to fully automated, integrated with "Rip Navigator" optimizing systems featuring the latest board scanning technology.

These systems will provide better feeding accuracy, detailed production and vendor reporting, improved lumber yield, higher profits and greater operator safety.



Specifications:

Capacity:

12" arbor space, thickness to 3" using 14" dia. tooling, 30" min. length for glue joint accuracy, 22" min. length bust-up only.

Shifting Saw(s):

One outboard shifting blade in combination with fixed saws. One inboard shifting blade in combination with fixed saws. Two inboard shifting blades in combination with fixed saws. 1" min. width net rip between shifting saws, 1-1/8" min. net rip between "CamLock" (patent pending) saw mounted saw collars (when using individual hold down shoes).

Laser Lights:

Machine mounted laser light stand arranged for mounting up to six laser lights. One traveling laser light provided for each shifting saw and integrated with saw adjust.

Arbor Drive:

Direct drive 50 HP, 3600 RPM TEFC Mereen-Johnson saw arbor motor.

Feed Drive:

3 HP with variable frequency speed control, infinitely variable, 30'-150' per minute.

Feed Bed:

"Posi-Feed" friction feed bed of structural aluminum feed slats with replaceable steel backed rubber inserts carried on precision "Double-Vee" hardened steel feed chains and track. Oil mist lubrication of feed system with low oil level auto feed shut-off.

Hold Downs:

Four 3" dia. air loaded press rolls. Spring loaded traveling shoes provided for each shifting blade. Spring loaded individual shoe or removable bed plate hold downs for fixed blades.

Anti-Kickbacks:

Single lower, double upper infeed. Single upper outfeed.

Dust Collection:

One 10" dia. and one 5" dia. upper, one 5" dia. lower, 4,060 total CFM required.

Electrical:

Arranged for 3/60/230 or 460 volt power supply (other electrics available).

Shipping Information:

Nominal 8' by 6' by 6' shipping skid, 7,200 lbs, 3,300 kg.



Mereen-Johnson Machine Co.
4401 Lyndale Avenue North
Minneapolis, Minnesota 55412 - USA
Phone - (612) 529-7791 - (888) 4MJSAWS (465-7297)
info@mereen-johnson.com www.mereen-johnson.com

MER-310-0207