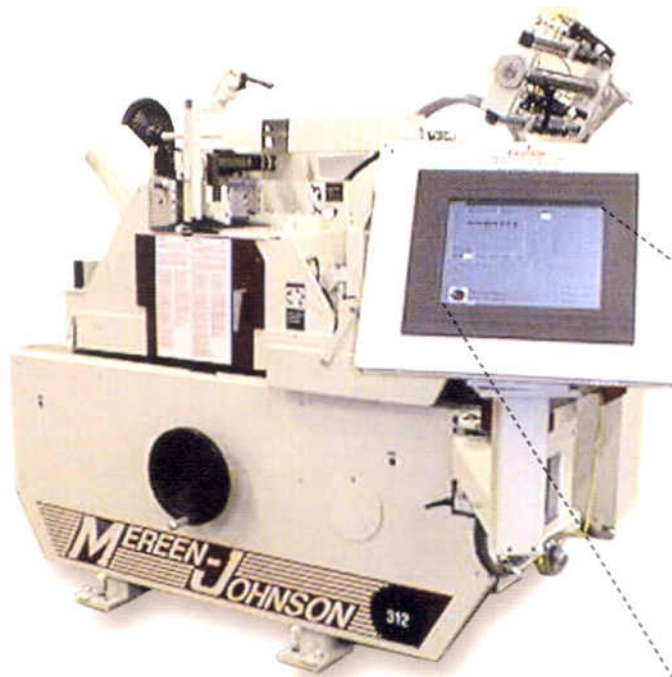




# MEREEN-JOHNSON MACHINE CO.

## Rip Navigator

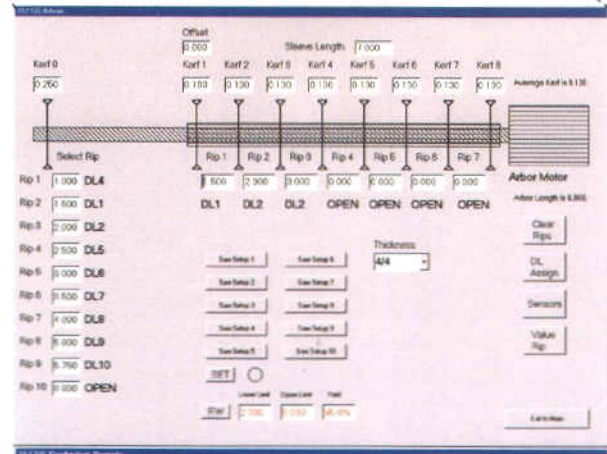
Gang Rip Saw Optimizing System



Enter Your Net Rips  
And Let **Rip Navigator**  
Keep You on Track.

### Rip Navigator:

Optimize Ripping Solutions  
Monitor Rip Selection  
Improve Lumber Yield  
Rip for Higher Value  
Monitor Inventory Production  
Track Vendors  
Extremely Economical



Arbor Set-Up on Touch Screen Interface

Your Guidance System to Increased Profits

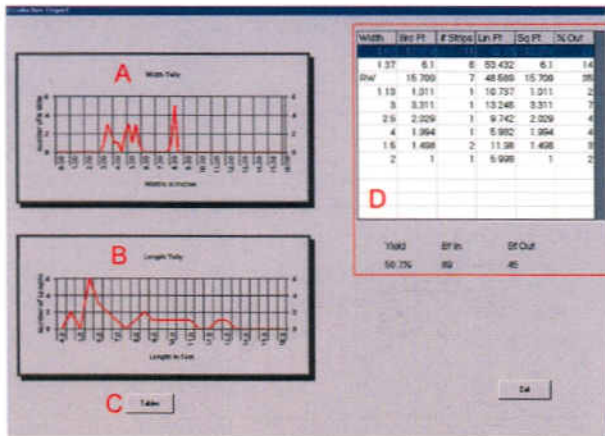
# Rip Navigator

## Gang Rip Saw Optimizing System

### For Mereen-Johnson Gang Rip Saws

**Rip Navigator** allows you to easily enter your cutting bill into the Computer via the Touch Screen Interface. Optimized rip solutions through laser light integration and optional automatic infeed fence positioning.

Lumber gross width is electronically measured, the computer optimizes the rip solution, positions the "Select" saw (when integrated with a Mereen-Johnson "Select-A-Rip" gang rip saw), and activates the appropriate laser lights to guide the operator to the correct feed position.



Simulated Production Report

## Rip Navigator

Allows you to not only track lumber input, but also net rip production out of the saw; Analyze yield and value; Control your lumber resources by vendor, species, grade, operator, or shift; and let's you be the Navigator.

## Features:

High Speed Industrial PC with Touch Screen Interface  
Board Width and Length Measurement

Multiple Board Solutions:

Single Straight Edge, Yield, Random Width or Value Modes

Laser Light Feeding Reference

Current Arbor Simulation Run

"Select" Saw Auto Positioning (if applicable)

Semi and Fully-Automatic Infeed System Options

## Benefits:

Realtime Production Records

Track Board Feet In, Net Rips Out

Easily Program Set-Ups

Maximum Lumber Yield & Value

Cutting Bill Priority or Random Width

Accurate Operator Feed Reference

"ENGINEERING TECHNOLOGY FOR PROFITABLE SOLUTIONS...SINCE 1905"



## MEREEN-JOHNSON MACHINE COMPANY

4401 Lyndale Avenue North  
Minneapolis, MN 55412 USA  
Tel. (612) 529-7791, 1-888-4MJ-SAWS  
Fax (612) 529-0120  
E-mail: [info@mereen-johnson.com](mailto:info@mereen-johnson.com)  
URL <http://www.mereen-johnson.com>

MERNAV-704