



Self-Contained Internal Return Dust Collection Systems



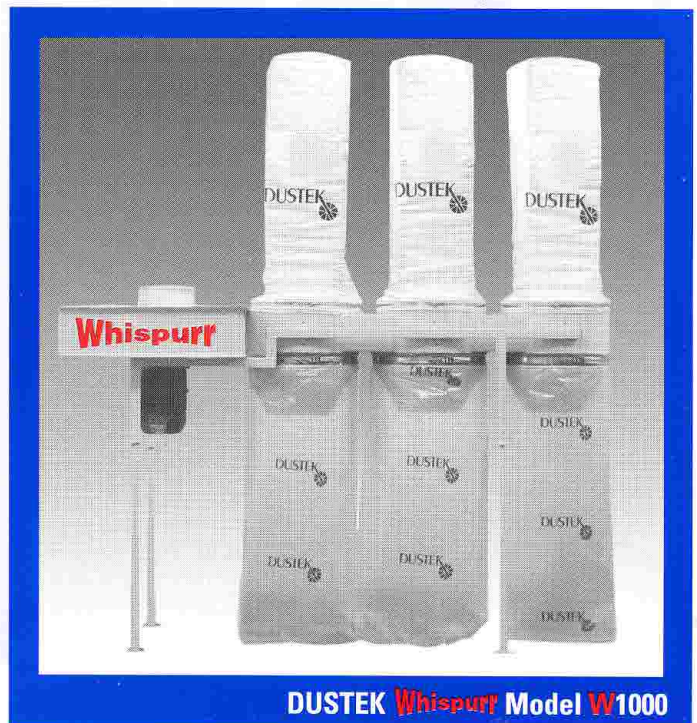
DUSTEK Classic Model 1000

- Efficient and Affordable
- Proven Design
- Heavy Duty Construction
- Easy Installation
- Quality and Value Made in America

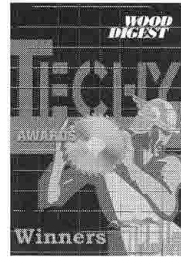
NEW Dustek **Whispurr**

Ultra-Quiet - 70 db

1st Place Techy Award
2001 Anaheim AWFS



DUSTEK **Whispurr** Model W1000



Boshco, Inc.

42 Manning Road
Billerica, MA 01821
Tel: 978-667-1911
Fax: 978-671-0011
www.boshco.com
contact@boshco.com

Dustek Dust Collectors are rugged and dependable and have a 15 year proven performance track record. Dustek collectors are highly cost effective by providing maximum filtration and collection capacity at a competitive price.

Dustek Dust Collectors are made in New England

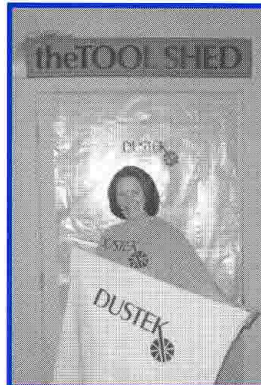
Durable, Efficient, Affordable, Flexible Heavy Gauge Steel Construction • Small Footprint - minimal production floor space required • 6 Models, 1000 - 7000 CFM Capacity • Internal Return Design - no heat loss • Large Collection Capacity • Easily Moved to satisfy changing requirements • Simple Installation • Minimal Maintenance

DUSTEK Features

- **Dustek Frames:** Heavy Gauge Steel Construction, Heavy Gauge Tubular Cross Supports, Durable Industrial Enamel Finish, Internal Baffling, Dustlock Barrel Design. Custom Heights Available.
- **Dustek Motors:** Severe Duty Totally Enclosed Fan Cooled (TEFC), 208/230v or 460/480v 3 phase 60 cycle. 2 year factory warranty, UL listed, CSA approved, CE approved. 1 Phase Available.
- **Dustek Filter Bags:** Increased Airflow Seamless Knit Polyester. Excellent Filtration Efficiencies, 99.5% to 99.9% at 1 Micron. Dustek Unique Dust Escape Locking Cord. Double Reinforced Bottom Closure.
- **Dustek Very Fine Dust ONLY Filter Cartridges:** Heavy Duty Durable Construction, 99.9% at 1 Micron. Maximum Filtration for Very Fine Dust.
- **Dustek Plastic Collection Bags:** Heavy Duty Special Polymer 6 Mil Thick, Double Sealed 15 Cu Ft Capacity.
- **Dustek Impellers:** High Quality 356 Alloy Aluminum. Precision Dynamically Balanced to Eliminate Vibration. Heat Treated to T/6 Hardness for Maximum Strength.
- **Dustek Unique:** "no-dust" Rubber Gaskets • "handsfree" Magnetic Plastic Bag Holders • "quick release" Clamps.
- **Siemens Magnetic Starters:** Pushbutton Across Line Magnetic Motor Starters, NEMA 1 Enclosures.



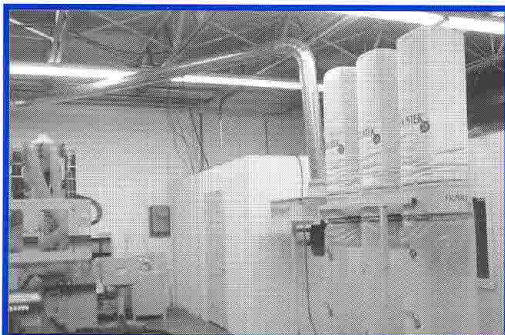
Dustek Classic Model 750 with Machining Centers



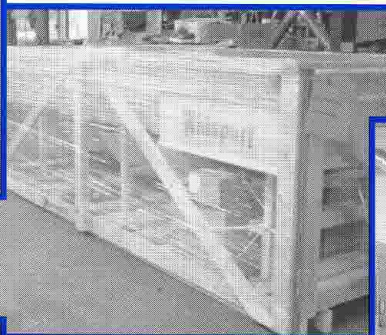
The Toolshed Division sells all Dustek parts



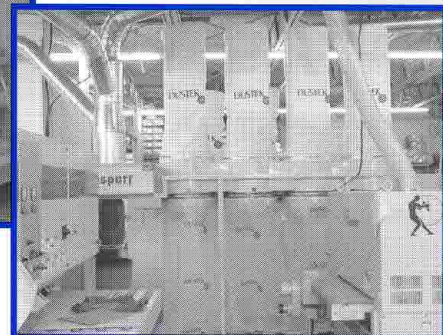
The Dustek assembly crew in action



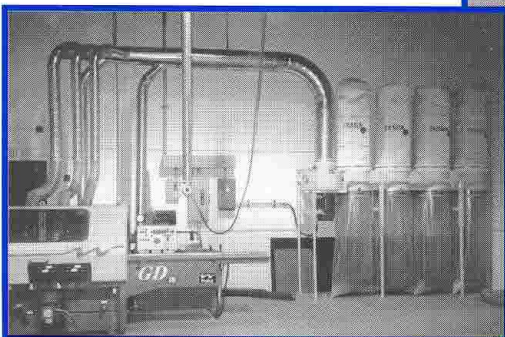
Dustek Whispurr Model W1000 with CNC Machining Center



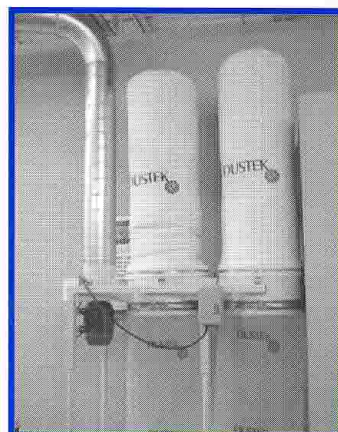
Dustek Whispurr Model W2000 en route to San Diego, CA



Dustek Whispurr Model W2000 with Widebelt Sanders



Dustek Classic Model 2000 with Moulder



Dustek Classic Model 500



Dustek Classic Model 300 with Double Facing Planer

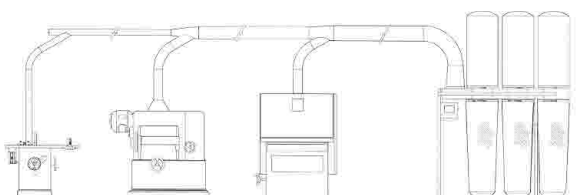


Diagram of DUSTEK Model 750 dust collector installation connected to a 10" tilting arbor saw table, a 24" single surface planer, and a 36" conveyor feed wide belt sander.



42 Manning Road • Billerica, MA 01821

Tel (978)667-1911 • Fax (978)671-0011

Toll Free 1-800-442-4430

info@dustek.com • www.dustek.com

Dustek is a Division of Boshco, Inc.



Model	Horsepower	Phase	Inlet Diameter in Inches	Storage in Cubic Ft.	Filter Area in Sq. Ft.	Width/Height/Length in Inches	Distance of Inlet to Floor in Inches	Filtration & Collection Bags	Weight in Lbs.	Approximate Air Volume CFM
300	3	1&3	7	15	25	24x113x46	71.5	1	370	1,000
500	5	1&3	10	30	50	24x113x73	72.5	2	675	2,000
750	7.5	1&3	12	45	100	24x125x97	75	3	700	3,000
1000	10	3	12	45	100	24x125x97	75	3	800	4,000
1500	15	3	14	60	132	32x137x130	83	4	1050	5,500
2000	20	3	14	60	160	32x173x130	83	4	1150	7,000
W1000	10	3	12	45	100	38x125x117	76	3	1250	4,000
W1500	15	3	14	60	132	42x137x149	81	4	1500	5,500
W2000	20	3	14	60	160	42x173x149	81	4	1600	7,000

Leasing Available.